



**FREE Wi-Fi
for
Everyone !**

- ✓ Smartphones, Tablets
- ✓ Connect to the Internet!
- ✓ kumamoto-free-wifi

<<How to connect>>

1. Open Wi-Fi settings on your device (smartphone, tablet, etc.)
2. Choose "kumamoto-free-wifi" network.

<<User Registration>>

Type of user registration depends on service area. This guide shows how to complete user registration for FREESPOT Type.

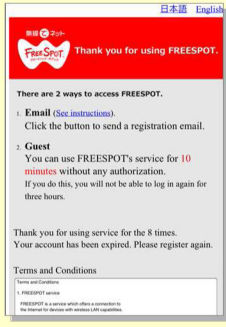
1. Open Browser
2. See below for the user registration.

<<Service Areas>>

[FREESPOT Type] Aso Kumamoto Airport Domestic Terminal, Aso Kumamoto Airport International Terminal, Ozu Visitor Center (Higo-Ozu Station), Amakusa Airport Terminal, Kumamoto Bus Terminal, Kumamoto Prefecture Theater, Environmental Education and Information Center, Minamata Disease Municipal Museum, Minamata Disease Archives, Minamata-shi Promotion Public Corporation MOYAI-Kan
 [NTT BP Type] JR Kumamoto Station (Available until March 31, 2014)
 * Service Areas provided by Kumamoto City (Available until March 31, 2014)
 [FREESPOT Type] Kumamoto Castle shop area, JOSAIEN Information Desk
 [NTT BP Type] Kamitori, Shimotoori, Shinshigai

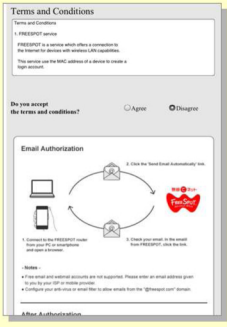
<<User Registration for FREESPOT Type>>

1. Opening screen



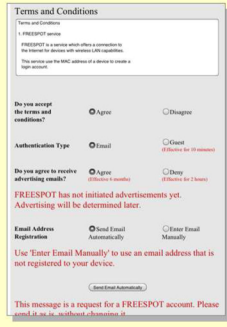
Select "English" on the top right, read Authentication Type, and scroll down.

2. Terms and Conditions



Read Terms and Conditions, and select "Agree".

3. Authentication Type



Select an Authentication Type and advertising option (effective period), select "Send Email Automatically", and click "Send Email Automatically"

4. Sending Email



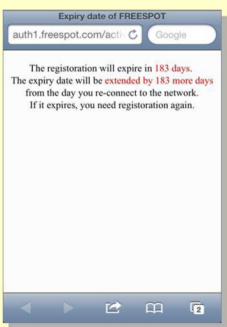
An email application will open. Send the email without making any changes.

5. Receiving Email



You will receive a preregistration email. Click on the URL in the email.

6. Authentication



The browser will open, and you will be authenticated.

7. Terms of Use



Read TOU (Japanese only), and click the button below.

8. Connected



Get connected to the Internet!

* User registration authenticated via email is valid for half a year. You may reconnect from step 7 anytime within that period.
 * When your registration is expired, or when you use a different device which was not used for registration, you will need to register again.
 * You can use Wi-Fi for ten minutes every three hours as a Guest. If you want to continue using Wi-Fi, you can register at any time.